

# INDOOR COLLECTION



SKAGERAK  
DENMARK



**SKAGERAK  
INDOOR LIVING**



We inspire consumers to be users. We all know that our planet is challenged by growing consumption and it's putting pressure on our resources. That's why we encourage people to prolong the lifetime of everything they use, because it matter whether a piece of furniture lives for 10, 20 or 30 years.

It all starts with great design. At Skagerak, we create quality furniture that ages with grace and lasts for generations. We care that you care, and we know that proper usage and maintenance is vital for getting the most out of the precious resources we have. On our new Care & Repair site we guide you on how to maintain and repair our products.

We have always designed things to last a lifetime. But what happens when people change their surroundings and needs? We want to make it easy to move on without leaving good things behind. With Reclassic we give pre-loved Skagerak pieces another life by buying them back, restoring and re-selling them. And with Skagerak RENT we offer a rental service so you can experience the joys of our furniture without owning it. These initiatives are our way of respecting the valuable materials and keeping them in circulation.

Skagerak is now 'Skagerak by Fritz Hansen'. Fritz Hansen stands behind Skagerak to bring the best of Danish design to every part of life, indoors and outdoors. Together the two companies will expand design possibilities with high-quality craftsmanship and beautiful design.

Josef Kaiser, CEO of Fritz Hansen and Skagerak, says, "Skagerak and Fritz Hansen are a natural fit. Both are rooted in Nordic design traditions and responsible manufacturing and synonymous with furniture and interior design of the highest quality."

Welcome to Skagerak By Fritz Hansen.

## BUSINESS AS USUAL?

*Can we afford to continue business as usual? It might sound ironic, but to keep things the way they are – we have to change a lot.*

Our planet is challenged by a growing population, increasing consumption and significant climate change. All of this is putting pressure on our natural resources and the reality is, that we all need to do a lot more with a lot less. We all have to consider our environmental and social impact on society equally to economic growth and profit. In fact, these elements could be each other's preconditions, not counterparts.

We have to stop our endless consumption and waste patterns – and see things for what they really are, valuable resources. Let's stop this linear thinking and start putting stuff into circulation. To design things that can be repaired, reused, rented, and regenerated. At Skagerak, we are far from perfect, but we strive to incorporate a new mindset in the way we run our business and we are inspired by the circular solutions that can shape the future of furniture.

What we do in Skagerak

In 2017, we joined the global B Corp movement – looking for new ways to use our business as a force for good. B Corps balance profit and purpose by meeting the highest standards for social and environmental performance, accountability, and transparency.

For us to join B Corp our goal is not to compete to be the best in the world - but to help each other become the best FOR the world.

We realize, that as a globally operating company, we have a great responsibility for today's development. We strive to be transparent about our efforts to minimize our negative footprint and maximize our positive contribution.

Skagerak has since 2003 been FSC<sup>TM</sup>-certified. FSC is a global non-profit organisation that ensures responsible forestry. The certificate also means that the workers never fell more trees than the forest can reproduce and the biodiversity of woods is preserved. FSC also means that the forestry workers are treated respectfully and have proper working conditions, just as FSC supports and cares for the local community.

Not only do we share the same goal of ensuring 100% certified wood by 2025, we now also share the same FSC certificate number with Fritz Hansen: FSC<sup>TM</sup> C120451. Look for our FSC-certified products in the catalogue.





**"AS A GLOBALLY OPERATING COMPANY, WE HAVE A GREAT RESPONSIBILITY FOR TODAY'S DEVELOPMENT. THAT'S WHY WE FOCUS BOTH ON MINIMIZING OUR NEGATIVE IMPACT AND MAXIMIZING OUR POSITIVE CONTRIBUTION."**



What has become an old classic for one person can become a Reclassic for someone else.





**GEORG**  
**STOOL** p. 46



**JUT HIGH  
CABINET** p. 49





Aino Mirror p. 52





Vent Bench p. 45



**GEORG  
BENCH** p. 46



Vent Stool p. 45







**JUT**  
**CABINET** p. 49







Vivlio Shelf System p. 44



**VIVLIO  
SHELF SYSTEM** p. 44





Hven Extension Plate p. 48



Hven Bar Stool w. Cushion p. 48



Hven Table p. 48

**HVEN**  
**COLLECTION** p. 48



**GEORG**  
**COLLECTION** p. 46







Georg Bench p. 46



**VESTER  
CHAIR** p. 49



**CUTTER  
BENCH** p. 41



Fionia Tray p. 50



Hammer Grinders p. 51



Fionia Tray p. 50, Dania Cutting Board and Sild Tray p. 51







Norr Shelf p. 52



Nomad Table Tray p. 50




Dania Step Ladder p. 43



DIRECTOR'S  
CHAIR p. 49





A photograph of a room featuring a perforated metal shelving unit on the left, a wooden stool with a tan seat on the right, and a patterned tile floor. The shelving unit contains various items including books, a framed picture, and a stack of papers. The stool is positioned in the foreground, and the floor has a repeating geometric pattern in shades of brown and blue.

**GEORG**  
**JUBILEE STOOL** p. 46

**CUTTER  
COLLECTION** p. 42





Cutter Mirror and Stool p. 41

**"THE IDEA BEHIND THE CUTTER BENCH IS THE COHERENT PROGRESSION OF THE FRAME AND THE STRINGENT REPETITION OF THE SLATS."**

/ Niels Hvass



Cutter Wardrobe p. 41, Collar Hanger p. 45

Georg Side Table p. 46



**INDOOR  
COLLECTION**

# MATERIALS/ INDOOR

Skagerak uses quality wood. Wood that will stand the test of time and is produced under responsible terms and conditions. We mostly use FSC™-certified wood, and work as ambassadors to help increase the number of certified woods to meet the demand. The total percentage of our certified wood is currently 93% and we are actively working towards our goal of 100% certified wood in our production by 2025. Look for our FSC-certified products in the catalogue.

Did you know that the CO<sup>2</sup> contained by wood remains in the timber, even after it has been turned into furniture and is not released into the atmosphere until it is scrapped? This means that if you keep your furniture for 50 years, the CO<sup>2</sup> is contained within the material the entire time.

Oak is a sturdy and hardwearing type of wood containing natural tannins that will protect against bacterial growth. The Skagerak oak comes from European forests and is either 100% FSC™-certified or FSC™-mix certified, supporting sustainable forest management. Several of our furniture produced in oak can be ordered in treatments that suit your needs. The treatments available are white soap, white oil or natural oil which all protect and strengthen the wooden surface.

Teak is a heavy, hard and sturdy type of wood. The high content of natural oils makes it highly resistant – perfect for functional everyday items in your home such as household articles and furniture. Quality teak is commonly found in South East Asia and Central and South America. Our 100% FSC™-certified Teak comes from Brazil, Panama, Costa Rica and Indonesia.

Leather is a strong and natural material that gets a beautiful patina over time. We use different types of leather – grain leather when we need the strong durability of the leather and aniline leather for a softer but still natural appearance.

Wool Several of our indoor cushions are made in wool. We have chosen to work with wool because it is a natural material that gives a sublime comfort due to its softness and ability to absorb/give off humidity. Moreover wool is naturally dirt resistant. We use Kvadrat fabrics for our indoor cushions.

Brass is an alloy of copper and zinc, popular for its superb malleability, hardness, corrosion resistance and attractive appearance. Brass will tarnish over time, but with a little care, the surface can be cleaned with brass polish and shine again.



**Cura Oil, Nature**  
Skagerak Design

1103041  
Treatment for wood products  
0,5 L



**Cura Oil, White**  
Skagerak Design

1103042  
Treatment for wood products  
0,5 L



**Cura Soap, White**  
Skagerak Design

1103040  
Treatment for wood products  
0,5 L





**Cutter Bench**  
Niels Hvass

S1920405  
Oak FSC™ Mix  
WxDxH: 121x40x43,5 cm  
Seat H: 43,5 cm



**Cutter Seat**  
Niels Hvass

S1920468  
Oak FSC™ Mix  
Stainless Steel  
WxDxH: 38,5x31x9,5 cm



## CUTTER STOOL

Niels Hvass

S1920465  
Oak FSC™ Mix  
WxDxH: 40x40x43,5 cm  
Seat H: 43,5 cm



**Cutter Mirror**  
Niels Hvass

S1920445  
Oak FSC™ Mix  
Mirror  
WxDxH: 50x6x110 cm



**Cutter Mini Wardrobe**  
Niels Hvass

S1920451  
Oak FSC™ Mix  
Stainless Steel  
WxDxH: 31x30x18,5 cm



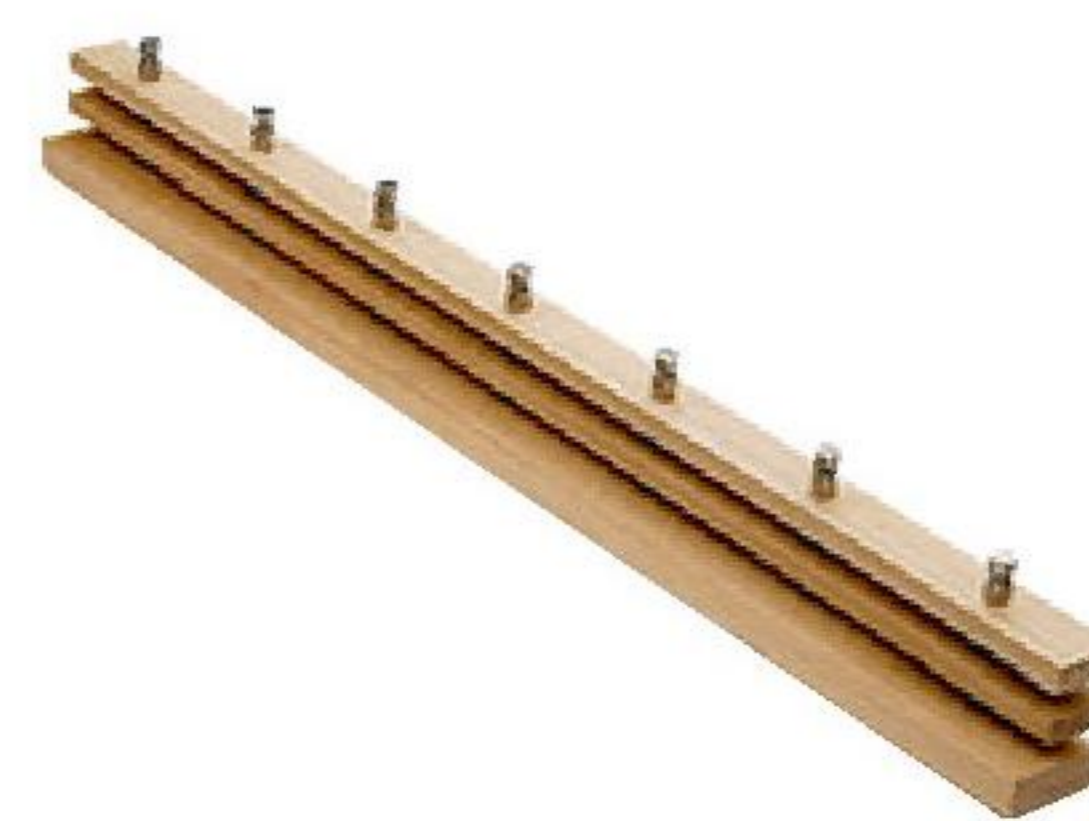
**Cutter Wardrobe**  
Niels Hvass

S1920455  
Oak FSC™ Mix  
Stainless Steel  
WxDxH: 120x34x13 cm



**Cutter Coat Rack**  
Niels Hvass

S1920482  
Oak FSC™ Mix  
Stainless Steel  
WxDxH: 72x8,5x7 cm



**Cutter Coat Rack**  
Niels Hvass

S1920480  
Oak FSC™ Mix  
Stainless Steel  
WxDxH: 100x12x7 cm



**Cutter Box**  
Niels Hvass

S1920435  
Oak FSC™ Mix  
WxDxH: 26x30x14 cm



**Cutter Box**  
Niels Hvass

S1920425  
Oak FSC™ Mix  
WxDxH: 30x36x34 cm



**Cutter Bench**  
Niels Hvass

S1920400  
Teak FSC™ 100%  
WxDxH: 121x40x43,5 cm  
Seat H: 43,5 cm



**Cutter Stool**  
Niels Hvass

S1920460  
Teak FSC™ 100%  
WxDxH: 40x40x43,5 cm  
Seat H: 43,5 cm



**Cutter Seat**  
Niels Hvass

S1920467  
Teak  
Stainless Steel  
WxDxH: 38,5x31x9,5 cm



**Cutter Mirror**  
Niels Hvass

S1920440  
Teak  
Mirror  
WxDxH: 50x6x110 cm



**Cutter Wardrobe**  
Niels Hvass

S1920450  
Teak FSC™ 100%  
Stainless Steel  
WxDxH: 120x34x13 cm



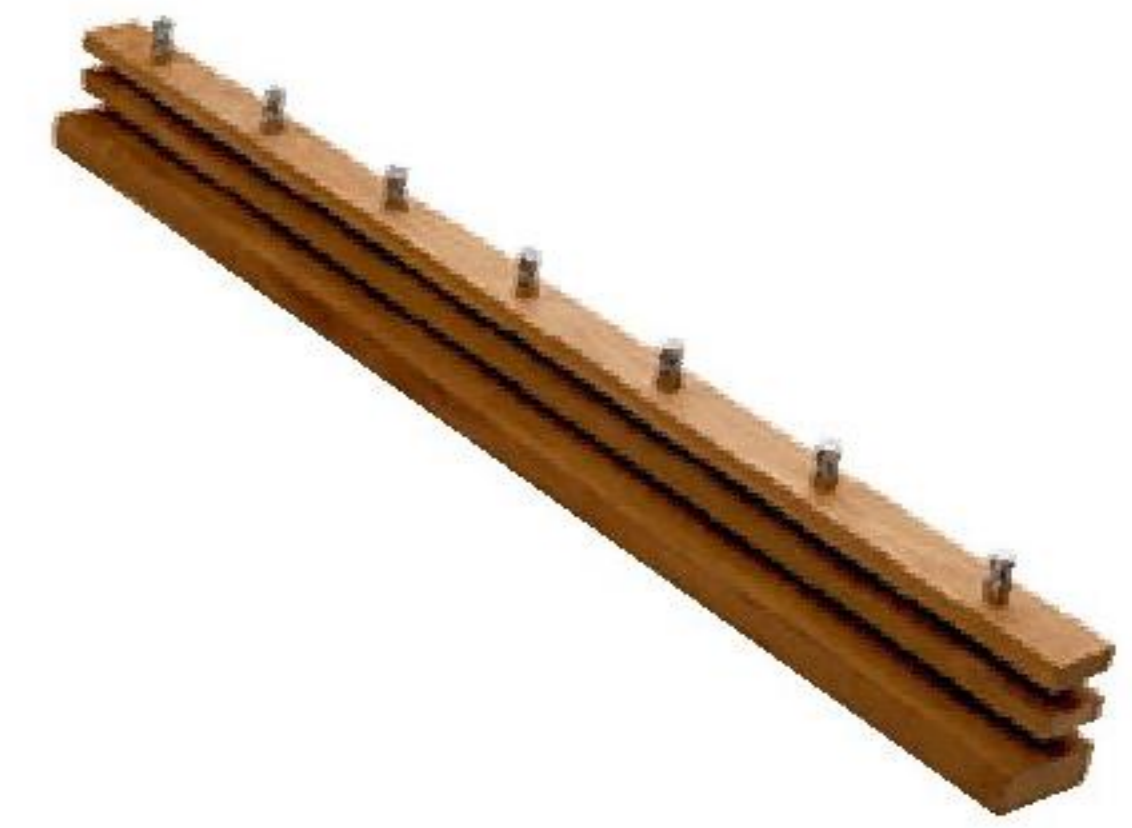
**Cutter Mini Wardrobe**  
Niels Hvass

S1920452  
Teak FSC™ 100%  
Stainless Steel  
WxDxH: 31x30x18,5 cm



**Cutter Coat Rack**  
Niels Hvass

S1920483  
Teak  
Stainless Steel  
WxDxH: 72x8,5x7 cm



**Cutter Coat Rack**  
Niels Hvass

S1920481  
Teak  
Stainless Steel  
WxDxH: 100x12x7 cm



**Cutter Bench**  
Niels Hvass

S1920403  
Oak FSC™ Mix / Black  
WxDxH: 121x40x43,5 cm  
Seat H: 43,5 cm



**Cutter Stool**  
Niels Hvass

S1920466  
Oak FSC™ Mix / Black  
WxDxH: 40x40x43,5 cm  
Seat H: 43,5 cm



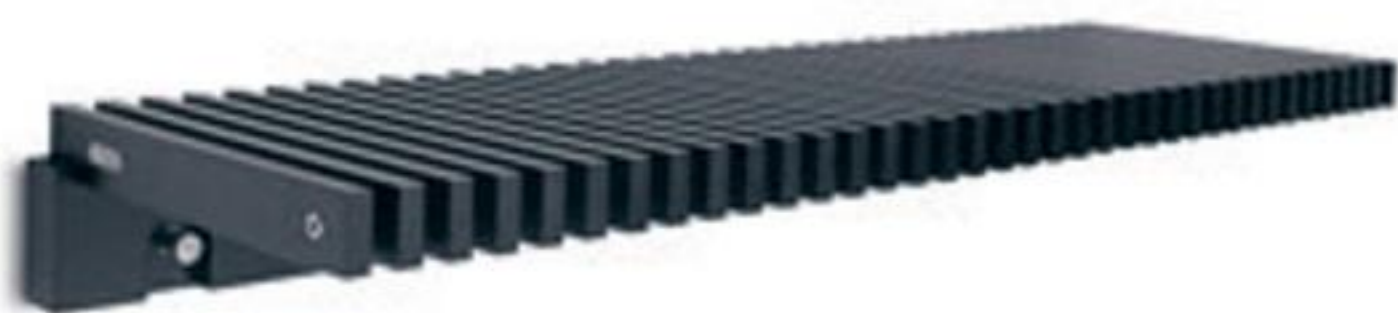
**Cutter Seat**  
Niels Hvass

S1920469  
Oak FSC™ Mix / Black  
Stainless Steel  
WxDxH: 38,5x31x9,5 cm



**Cutter Mirror**  
Niels Hvass

S1920443  
Oak FSC™ Mix / Black  
Mirror  
WxDxH: 50x6x110 cm



**Cutter Wardrobe**  
Niels Hvass

S1920453  
Oak FSC™ Mix / Black  
Stainless Steel  
WxDxH: 120x34x13 cm



**Cutter Mini Wardrobe**  
Niels Hvass

S1920454  
Oak FSC™ Mix / Black  
Stainless Steel  
WxDxH: 31x30x18,5 cm



**Cutter Coat Rack**  
Niels Hvass

S1920484  
Oak FSC™ Mix / Black  
Stainless Steel  
WxDxH: 72x8,5x7 cm



**Cutter Coat Rack**  
Niels Hvass

S1920489  
Oak FSC™ Mix / Black  
Stainless Steel  
WxDxH: 100x12x7 cm



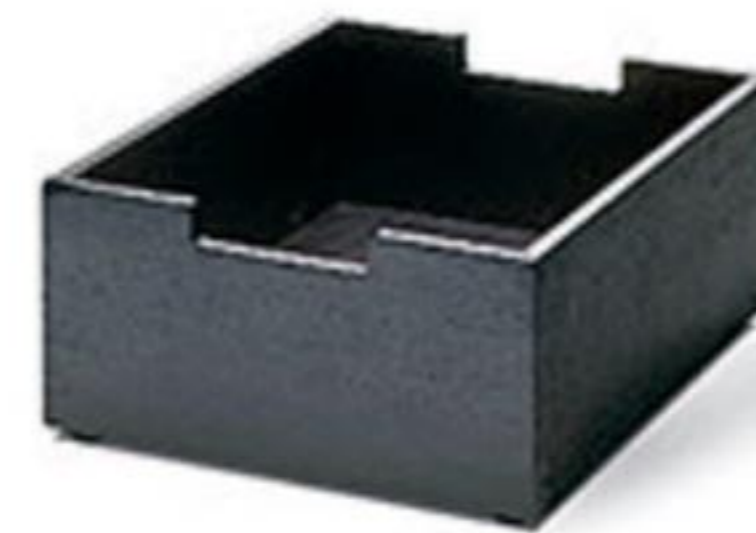
**Cutter Box**  
Niels Hvass

S1920430  
Teak  
WxDxH: 26x30x14 cm



**Cutter Box**  
Niels Hvass

S1920420  
Teak  
WxDxH: 30x36x34 cm



**Cutter Box**  
Niels Hvass

S1920433  
Oak FSC™ Mix / Black  
WxDxH: 26x30x14 cm



**Cutter Box**  
Niels Hvass

S1920423  
Oak FSC™ Mix / Black  
WxDxH: 30x36x34 cm



**Dania Step Ladder**  
Designit

S1600536  
Oak FSC™ Mix  
WxDxH: 37x38x51 cm



**Dania Step Ladder**  
Designit

S1600517  
Teak FSC™ 100%  
WxDxH: 37x38x51 cm



## NOBORU STEP LADDER

MSDS Studio

1420060  
Oak FSC™ 100%  
WxDxH: 45x31x47 cm / Seat H: 47 cm



**Dania Stool**  
Designit

S1600631  
Oak FSC™ Mix  
WxDxH: 38x34,5x27,5 cm  
Seat H: 27,5 cm



**Dania Stool**  
Designit

S1600630  
Teak FSC™ 100%  
WxDxH: 38x34,5x27,5 cm  
Seat H: 27,5 cm



**Fionia Stool**  
Jens H. Quistgaard

S1600503  
Oak FSC™ 100%  
WxDxH: 40x33,5x44 cm  
Seat H: 44 cm



**Fionia Stool**  
Jens H. Quistgaard

S1600505  
Teak FSC™ 100%  
WxDxH: 40x33,5x44 cm  
Seat H: 44 cm



**Nomad Stool**  
VE2

1930252  
Oak FSC™ 100%  
WxDxH: 38,5x38,5x45 cm  
Seat H: 45 cm / Stackable H: 4 stools



**Vivlio Shelf**  
Included Middle

1930464  
Oak FSC™ Mix  
WxDxH: 80x34x7 cm



**Vivlio Shelf**  
Included Middle

1930463  
Oak FSC™ Mix  
WxDxH: 80x34x16 cm



**Vivlio Shelf**  
Included Middle

1930462  
Oak FSC™ Mix  
WxDxH: 80x34x25 cm



**Vivlio Shelf**  
Included Middle

1930469  
Oak FSC™ Mix / Black  
WxDxH: 80x34x7 cm



**Vivlio Shelf**  
Included Middle

1930468  
Oak FSC™ Mix / Black  
WxDxH: 80x34x16 cm



**Vivlio Shelf**  
Included Middle

1930467  
Oak FSC™ Mix / Black  
WxDxH: 80x34x25 cm



**Vivlio Frame**  
Included Middle

1930474  
Steel / Silk Grey  
WxDxH: 83,5x26x29,5 cm



**Vivlio Frame**  
Included Middle

1930473  
Steel / Cinnamon Brown  
WxDxH: 83,5x26x29,5 cm



**Vivlio Frame**  
Included Middle

1930475  
Steel / Black  
WxDxH: 83,5x26x29,5 cm

## VIVLIO SHELF SYSTEM

Vivlio is a modular shelving system with endless possibilities. It consists of two elements, steel frames in three different colours and wooden shelves in three sizes. The choice is yours.



**Reykjavik Daybed**  
Included Middle

1560020-1  
Douglas Pine  
WxDxH: 200x73,5x30 cm  
Seat H: 30 cm



**Reykjavik Daybed**  
Included Middle

1560020  
Douglas Pine  
Wool / Mixed Colours  
WxDxH: 200x73,5x38 cm / Seat H: 38 cm



**Reykjavik Daybed**  
Included Middle

1560021  
Douglas Pine  
Re-wool / Mixed Colours  
WxDxH: 200x73,5x38 cm / Seat H: 38 cm



**Maissi Bench**  
Wesley Walters & Salla Luhtasela

1480080  
Oak FSC™ 100%  
WxDxH: 103x47,5x78 cm / Seat H: 45 cm  
Available treatments: 1480080-1 White Soap /  
1480080-2 White Oil / 1480080-3 Oil



**Vent Bench**  
Chris Liljenberg Halstrøm

1930651  
Steel / Black  
Paper Cord  
WxDxH: 85x32,5x44 cm / Seat H: 43 cm



**Vent Stool**  
Chris Liljenberg Halstrøm

1930650  
Steel / Black  
Paper Cord  
WxDxH: 43x29x44 cm / Seat H: 43 cm



**Building Table**  
Bicolter

1490000  
Oak FSC™ Mix  
LxWxH: 34,5x34,5x40 cm



**Collar Hanger**  
TAF

1431018  
Oak FSC™ 100%  
Stainless Steel  
LxWxH: 43x1,5x22,5 cm



**Collar Hanger**  
TAF

1431022  
Teak FSC™ 100%  
Stainless Steel  
LxWxH: 43x1,5x22,5 cm



**Collar Hanger**  
TAF

1431019  
Oak FSC™ 100% / Black  
Anodized Aluminum / Black  
LxWxH: 43x1,5x22,5 cm



**Building Table**  
Bicolter

1490003  
Oak FSC™ Mix  
LxWxH: 40x40x49 cm



**Pilot Hanger**  
Nina Tolstrup

S1600627  
Oak  
Stainless Steel  
LxWxH: 43x4x21 cm



**Pilot Hanger**  
Nina Tolstrup

S1600626  
Teak  
Stainless Steel  
LxWxH: 43x4x21 cm



**Pilot Hanger**  
Nina Tolstrup

S1600628  
Oak / Black  
Stainless Steel  
LxWxH: 43x4x21 cm



## GEORG BENCH

Chris Liljenberg Halstrøm

1930381\*  
Oak FSC™ 100%  
Linen  
WxDxH: 124x38x46 cm / Seat H: 46 cm



### Georg Side Table

Chris Liljenberg Halstrøm

1930347  
Oak FSC™ 100%  
LxWxH: 36x32x44 cm



### Georg Dining Table

Chris Liljenberg Halstrøm

S1930329  
Oak FSC™ Mix  
LxWxH: 155x90x73 cm  
Available treatments: 1930341 White Soap /  
1930342 White Oil / 1930343 Oil



### Georg Stool

Chris Liljenberg Halstrøm

1930380\*  
Oak FSC™ 100%  
Linen  
WxDxH: 45x32x46 cm / Seat H: 46 cm



### Georg Jubilee Stool

Chris Liljenberg Halstrøm

1930337\*\*  
Oak FSC™ 100%  
Leather  
WxDxH: 46x32x46 cm / Seat H: 46 cm



### Georg Bench

Chris Liljenberg Halstrøm

S1930300\*  
Oak FSC™ 100%  
Wool / Dark Grey  
Leather / Black  
WxDxH: 124x38x46 cm / Seat H: 46 cm



### Georg Stool

Chris Liljenberg Halstrøm

S1930301\*  
Oak FSC™ 100%  
Wool / Dark Grey  
Leather / Black  
WxDxH: 45x32x46 cm / Seat H: 46 cm



### Georg Bar Stool

Chris Liljenberg Halstrøm

S1930327\*  
Oak FSC™ 100%  
Wool / Dark Grey  
Leather / Black  
WxDxH: 45x32x67 cm / Seat H: 67 cm



### Georg Bench

Chris Liljenberg Halstrøm

S1930309\*  
Oak FSC™ 100% / Black  
Wool / Light Grey  
Leather  
WxDxH: 124x38x46 cm / Seat H: 46 cm



### Georg Stool

Chris Liljenberg Halstrøm

S1930307\*  
Oak FSC™ 100% / Black  
Wool / Light Grey  
Leather  
WxDxH: 45x32x46 cm / Seat H: 46 cm



### Georg Bar Stool

Chris Liljenberg Halstrøm

S1930328\*  
Oak FSC™ 100% / Black  
Wool / Light Grey  
Leather  
WxDxH: 45x32x67 cm / Seat H: 67 cm



**Georg Console Table**  
Chris Liljenberg Halstrøm

S1930302  
Oak FSC™ 100%  
LxWxH: 90x32x73 cm



**Georg Desk**  
Chris Liljenberg Halstrøm

S1930331  
Oak FSC™ 100%  
LxWxH: 110x42x73,5 cm



**Georg Desk**  
Chris Liljenberg Halstrøm

1930349  
Oak FSC™ 100%  
LxWxH: 120x65x73 cm



**Georg Desk Drawer**  
Chris Liljenberg Halstrøm

S1930333  
Oak FSC™ 100%  
WxDxH: 34x41,5x9 cm  
Fits Georg Desk 1930349 & S1930331



**Georg Console Table**  
Chris Liljenberg Halstrøm

S1930310  
Oak FSC™ 100% / Black  
LxWxH: 90x32x73 cm



**Georg Mirror**  
Chris Liljenberg Halstrøm

S1930314  
Oak FSC™ 100% / Black  
Mirror  
WxDxH: 55x3x190 cm



**Georg Mirror**  
Chris Liljenberg Halstrøm

S1930303  
Oak FSC™ 100%  
Mirror  
WxDxH: 55x3x190 cm



**Georg Shoehorn**  
Chris Liljenberg Halstrøm

1930338  
Oak FSC™ 100%  
Leather / Black  
ØxH: 4x45 cm



**Georg Hanger**  
Chris Liljenberg Halstrøm

S1930318  
Oak FSC™ 100%  
Anodized Aluminum / Black  
LxWxH: 45x1,5x19 cm



**Georg Hangers**  
Chris Liljenberg Halstrøm

S1930305  
Oak FSC™ 100%  
Leather / Black  
LxWxH: 45x3x11 cm



**Georg Rack**  
Chris Liljenberg Halstrøm

S1930313  
Oak FSC™ 100%  
WxDxH: 60x15x6,5 cm



**Georg Rack**  
Chris Liljenberg Halstrøm

S1930304  
Oak FSC™ 100%  
WxDxH: 115x15x6,5 cm



**Georg Hanger**  
Chris Liljenberg Halstrøm

S1930317  
Oak FSC™ 100% / Black  
Anodized Aluminum / Black  
LxWxH: 45x1,5x19 cm



**Georg Rack**  
Chris Liljenberg Halstrøm

S1930312  
Oak FSC™ 100% / Black  
WxDxH: 60x15x6,5 cm



**Georg Rack**  
Chris Liljenberg Halstrøm

S1930311  
Oak FSC™ 100% / Black  
WxDxH: 115x15x6,5 cm



## HVEN TABLE

Anton Björnsing

1420009

Oak FSC™ 100%

Ø×H: 110×73 cm

Available treatments:

1420009-1 White Soap / 1420009-2 White Oil / 1420009-3 Oil



## Hven Bar Stool

Anton Björnsing

1420026

Oak FSC™ 100%

Stainless Steel

W×D×H: 47×44,5×86 cm / Seat H: 67 cm

Available treatments:

1420026-1 White Soap / 1420026-2 White Oil / 1420026-3 Oil



## Hven Bench

Anton Björnsing

1420021

Oak FSC™ 100%

W×D×H: 125×36×45 cm / Seat H: 45 cm

Available treatments:

1420021-1 White Soap  
1420021-2 White Oil / 1420021-3 Oil



## Hven armchair

Anton Björnsing

1420010

Oak FSC™ 100%

W×D×H: 53×52,5×86,5 cm / Seat H: 44,5 cm

Available treatments:

1420010-1 White Soap  
1420010-2 White Oil / 1420010-3 Oil



## Hven Table

Anton Björnsing

1420005

Oak FSC™ 100%

L×W×H: 190×94×73 cm

Available treatments:

1420005-1 White Soap / 1420005-2 White Oil / 1420005-3 Oil



## Hven Table

Anton Björnsing

1420008

Oak FSC™ 100%

L×W×H: 260×94×73 cm

Available treatments:

1420008-1 White Soap / 1420008-2 White Oil / 1420008-3 Oil



## Hven Extension Plate

Anton Björnsing

1420007

MDF / Light Grey

L×W×H: 94×67×7,5 cm



## Hven Chair Cushion

Anton Björnsing

1950530\*

Aniline Leather / Cognac

L×W×H: 42,5×44×1 cm



## Hven Bar Stool Cushion

Anton Björnsing

1961038\*

Aniline Leather / Cognac

L×W×H: 38×36×1 cm



## Hven Bench Cushion

Anton Björnsing

1950532\*

Aniline Leather / Cognac

L×W×H: 123,5×34,5×1 cm





**Jut Cabinet**  
Thomas Jenkins

1090102  
Oiled Oak FSC™ Mix  
LxWxH: 126x39x68 cm



**Jut Cabinet**  
Thomas Jenkins

1090101  
Oiled Oak FSC™ Mix  
Marble / Black  
LxWxH: 126x39x68 cm



**Jut Cabinet**  
Thomas Jenkins

1090104  
Oiled Oak FSC™ Mix  
Marble / Green  
LxWxH: 126x39x68 cm



**Jut High Cabinet**  
Thomas Jenkins

1090108  
Oiled Oak FSC™ Mix  
LxWxH: 86,5x39,5x114 cm



**Jut High Cabinet**  
Thomas Jenkins

1090106  
Oiled Oak FSC™ Mix  
Marble / Black  
LxWxH: 86,5x39,5x114 cm



**Jut High Cabinet**  
Thomas Jenkins

1090107  
Oiled Oak FSC™ Mix  
Marble / Green  
LxWxH: 86,5x39,5x114 cm



**Aldus Table**  
Chris Liljenberg Halstrøm

1420036  
Oiled Oak FSC™ 100%  
LxWxH: 160x85x73 cm



**Aldus Table**  
Chris Liljenberg Halstrøm

1420037  
Oiled Oak FSC™ 100%  
LxWxH: 180x85x73 cm



**Aldus Table**  
Chris Liljenberg Halstrøm

1420034  
Oiled Oak FSC™ 100%  
LxWxH: 200x100x73 cm



**Vester Chair Cushion**  
Chris Liljenberg Halstrøm

1961070\*\*  
Aniline Leather / Cognac  
LxWxH: 42,5x44x1 cm



**Vester Chair**  
Chris Liljenberg Halstrøm

1092000-3  
Oiled Oak FSC™ 100%  
Brass  
WxDxH: 47x51,5x79 cm / Seat H: 44,5 cm



**Director's Chair**  
Skagerak Design

S1900585\*\*  
Teak  
Canvas / White  
WxDxH: 57x43x87,5 cm  
Seat H: 46 cm



**Norr Carrier**  
Ditte Buus Nielsen

1930237  
Oak FSC™ Mix  
Brass  
LxWxH: 22x15,5x20,5 cm



**Norr Carrier**  
Ditte Buus Nielsen

1930257  
Oak FSC™ Mix / Black  
Brass  
LxWxH: 22x15,5x20,5 cm



**Norr Paper Towel Holder**  
Ditte Buus Nielsen

S1930239  
Oak FSC™ 100%  
Leather  
ØxH: 14x30,5 cm



**Norr Paper Towel Holder**  
Ditte Buus Nielsen

1930261  
Oak FSC™ 100% / Black  
Leather / Black  
ØxH: 14x30,5 cm



**Norr Tray**  
Skagerak Design

S1930233  
Oak FSC™ Mix  
Leather  
LxWxH: 46x25,5x2,5 cm



**Norr Tray**  
Skagerak Design

1930262  
Oak FSC™ Mix / Black  
Leather / Black  
LxWxH: 46x25,5x2,5 cm



**Nordic Tray**  
VE2

1600315  
Oak FSC™ 100%  
ØxH: 30x3,5 cm



**Nordic Tray**  
VE2

1600316  
Oak FSC™ 100%  
ØxH: 45x3,5 cm



**Fionia Tray**  
Skagerak Design

S1600588  
Oak FSC™ 100%  
LxWxH: 48x32x6 cm



**Fionia Tray**  
Skagerak Design

1600506  
Oak FSC™ 100%  
LxWxH: 52x36x6 cm



**Fionia Tray**  
Skagerak Design

S1600509  
Teak  
LxWxH: 48x32x6 cm



**Fionia Tray**  
Skagerak Design

S1600507  
Teak  
LxWxH: 52x36x6 cm



**No. 10 Tray**  
Teruhiro Yanagihara

1600494  
Oak FSC™ Mix  
LxWxH: 36,5x30x3,5 cm



**No. 10 Tray**  
Teruhiro Yanagihara

1600495  
Oak FSC™ Mix  
LxWxH: 45x32x3,5 cm



**No. 10 Tray**  
Teruhiro Yanagihara

1600496  
Oak FSC™ Mix  
LxWxH: 53,5x34x3,5 cm



**Nomad Table Tray**  
VE2

1930251  
Oak FSC™ Mix  
Steel / Silk Grey  
LxWxH: 60x35x22 cm



**Hammer Grinder**  
Christoffer Harlang

1836571  
Oak FSC™ 100%  
Ø×H: 6,5×12 cm



**Hammer Grinder**  
Christoffer Harlang

1836572  
Oiled Teak  
Ø×H: 6,5×12 cm



**Sild Tray**  
Søren Refsgaard

1600971  
Oiled Teak FSC™ 100%  
L×W×H: 49×24,5×1,5 cm



**Sild Tray**  
Søren Refsgaard

1600973  
Oiled Teak FSC™ 100%  
L×W×H: 55×16×1,5 cm



## DANIA CUTTING BOARD

Skagerak Design

S1990891  
Oiled Teak Endgrain  
L×W×H: 33×21×2,5 cm



**Dania Cutting Board**  
Skagerak Design

S1990845  
Oiled Teak Endgrain FSC™ 100%  
L×W×H: 35×24×4 cm



**Dania Cutting Board**  
Skagerak Design

S1990844  
Oiled Teak Endgrain FSC™ 100%  
L×W×H: 40×24×2,5 cm



**Dania Cutting Board**  
Skagerak Design

S1990847  
Oiled Teak Endgrain FSC™ 100%  
L×W×H: 50×27×3 cm



**Dania Cutting Board**  
Skagerak Design

S1990890  
Oiled Teak Endgrain FSC™ 100%  
L×W×H: 56×35×4 cm



**Dania Box**  
Skagerak Design

S1600572  
Teak FSC™ 100%  
L×W×H: 31×22×13 cm



**Dania Box**  
Skagerak Design

S1600571  
Teak FSC™ 100%  
L×W×H: 44,5×31×13 cm



**Dania Box**  
Skagerak Design

S1600568  
Teak FSC™ 100%  
L×W×H: 31×22×25,5 cm



## NORR SHELF

Ditte Buus Nielsen

1930255  
Oak FSC™ 100%  
Leather  
Brass  
WxDxH: 36x10x76 cm



## Aino Mirror

Wesley Walters & Salla Luhtasela

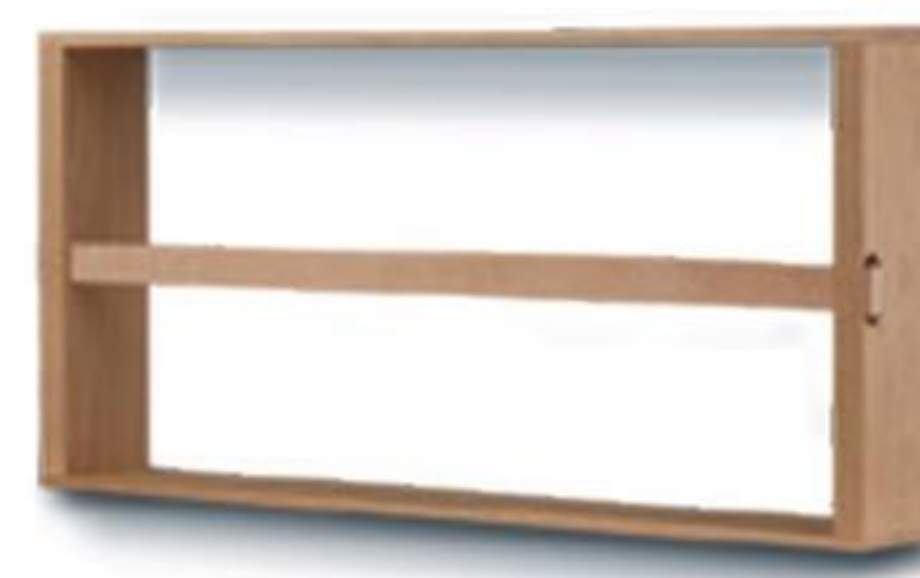
1480004  
Oak  
Mirror  
WxDxH: 26,5x7x32 cm



## Aino Mirror

Wesley Walters & Salla Luhtasela

1480003  
Oak  
Mirror  
WxDxH: 14x4x21 cm



## Norr Magazine Holder

Ditte Buus Nielsen

1930249  
Oak FSC™ 100%  
Leather  
Brass  
WxDxH: 75x10x35 cm



## Norr Magazine Holder

Ditte Buus Nielsen

1930270  
Oak FSC™ 100%  
Leather  
Brass  
WxDxH: 120x10x35 cm



## Dania Letter Tray

Skagerak Design

S1902007  
Oak FSC™ Mix  
LxWxH: 28x40x21 cm



## Nomad Box

VE2

S1930231  
Oak FSC™ Mix  
LxWxH: 14x14x5,5 cm



## Nomad Pen Holder

VE2

S1930242  
Oak FSC™ 100%  
LxWxH: 7,5x7,5x13 cm



## Nomad Tray

VE2

S1930230  
Oak FSC™ Mix  
LxWxH: 42x14x3 cm



## Nomad Letter Tray

VE2

S1930240  
Oak FSC™ Mix  
LxWxH: 23,5x32x4 cm



## Nomad Tray

VE2

S1930241  
Oak FSC™ 100%  
LxWxH: 23,5x14x2,5 cm



**Stella Christmas Tree Base**  
Skagerak Design

1986045  
Oak FSC™ 100%  
Brass Plated Steel  
Ø×H: 50,5×15,5 cm



**Dania Mat**  
Skagerak Design

S1600231  
Teak FSC™ 100%  
Stainless Steel  
L×W×H: 58,5×41×2,5 cm



**Dryp Drying Rack**  
Rikke Frost

S1600665  
Oak FSC™ Mix  
W×D×H: 70×10×103/180 cm



**Edge Plate**  
Stilleben

1810480  
Brass  
Ø×H: 18×3 cm



**Edge Plate**  
Stilleben

1810481  
Brass  
Ø×H: 25×3 cm



**Edge Plate**  
Stilleben

1810482  
Brass  
Ø×H: 35×3 cm



**Edge Pot**  
Stilleben

1810409  
Glazed Terracotta  
Ø×H: 15×15 cm



**Edge Pot**  
Stilleben

1810410  
Glazed Terracotta  
Ø×H: 18×18 cm



**Edge Pot**  
Stilleben

1810430  
Glazed Terracotta  
Ø×H: 25×24 cm



**Edge Pot**  
Stilleben

1810431  
Glazed Terracotta  
Ø×H: 35×34 cm



**Edge Pot**  
Stilleben

1810432  
Glazed Terracotta / Light Grey  
Ø×H: 15×15 cm



**Edge Pot**  
Stilleben

1810433  
Glazed Terracotta / Light Grey  
Ø×H: 18×18 cm



**Edge Pot**  
Stilleben

1810434  
Glazed Terracotta / Light Grey  
Ø×H: 25×24 cm



**Edge Pot**  
Stilleben

1810435  
Glazed Terracotta / Light Grey  
Ø×H: 35×34 cm



SKAGERAK  
OUTDOOR LIVING

Art Direction and styling of images / Graphic Design:  
All the Way to Paris  
2023 moderation by Skagerak by Fritz Hansen

Photography:  
Magnus Ekstrøm

© Fritz Hansen  
2023

